

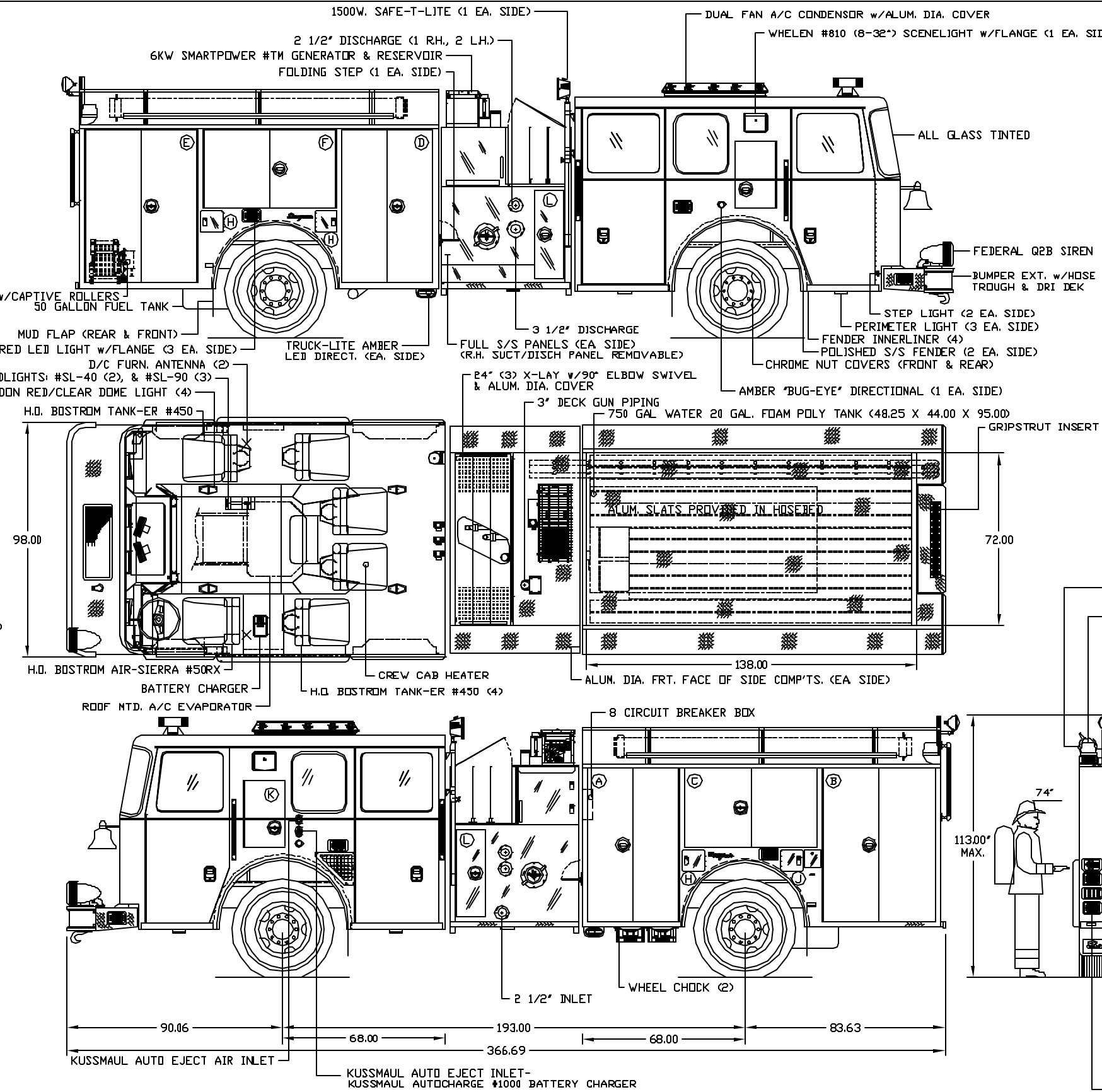
NOTES

ALL VERTICALLY HINGED COMP'T. DOORS TO HAVE HANSEN DOOR STAYS
 PRV. 12" ATP KICKPLATE ON INTERIOR REAR WALL OF CAB
 PRV. ALUMASTRUT PER QW 59-15-06
 PRV. (1) #500 ROLLOUT TRAY PWE QW 59-17-15
 PRV. (2) ALUM. PEGBOARD PERE QW 59-16-07
 PRV. BRUSHED S/S BODYSIDE RUBRAILS
 COMP'TS. 'B', 'E', & 'G' TO BE OPEN THROUGH FROM SIDE TO SIDE
 PRV. WEIGHTED NYLON END FLAPS FOR HOSEBED COVERS

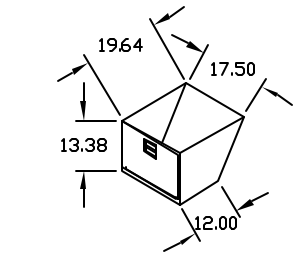
COMPARTMENTS

A	ONE	40.50 WIDE	64.50 HIGH	23.75 DEEP
B	ONE	47.00 WIDE	64.50 HIGH	23.75 DEEP
C	ONE	60.00 WIDE	33.38 HIGH	23.75 DEEP
D	ONE	40.50 WIDE	64.50 HIGH	23.75 DEEP
E	ONE	47.00 WIDE	64.50 HIGH	23.75 DEEP
F	ONE	60.00 WIDE	33.38 HIGH	9.50 DEEP
G	ONE	46.00 WIDE	46.00 HIGH	24.00 DEEP
H	THREE	< 2 SCBA BOTTLES EACH		
J	ONE	< 1 SCBA BOTTLE		
K	ONE	16.00 WIDE	25.00 HIGH	21.00 DEEP
L	TWO	12.00 WIDE	34.75 HIGH	12.00 DEEP
		UPPER TRANS.	20.00 HIGH	9.00 WIDE

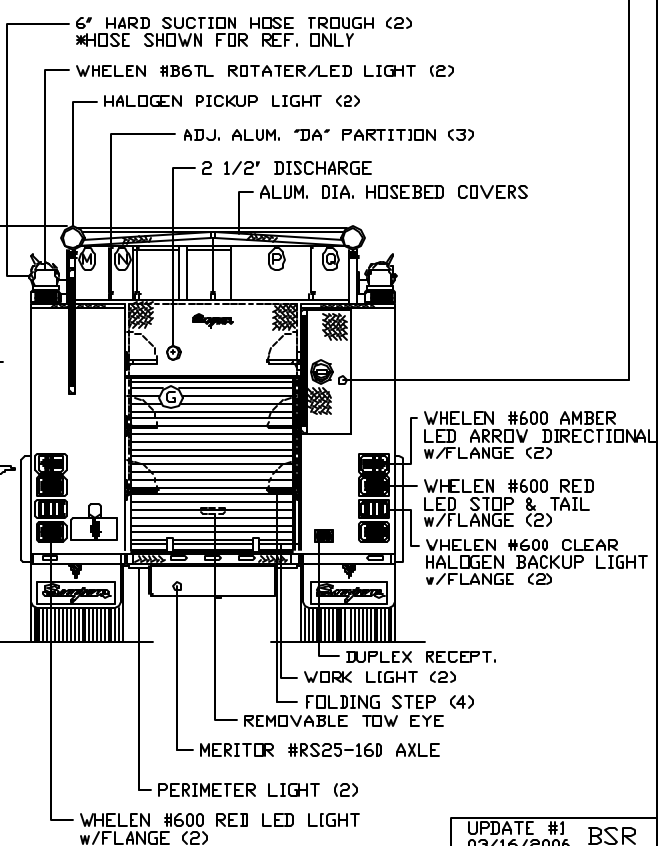
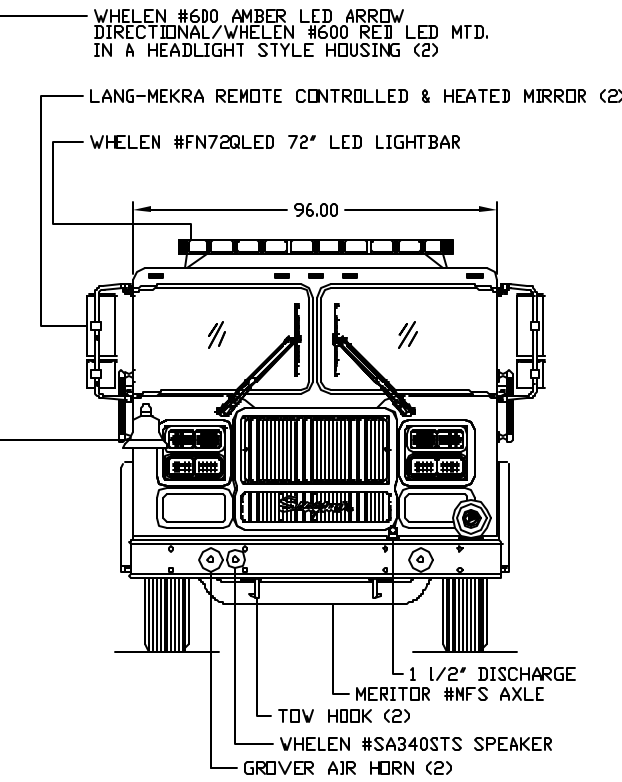
HOSE BED CAPACITY			
AMOUNT OF HOSE	WIDTH	HEIGHT	
M 400 FT. 2 1/2"	9.00	14.00	
N 400 FT. 1 3/4"	7.00	14.00	
P 1100 FT. 4"	46.00	14.00	
Q 400 FT. 3"	10.00	14.00	



DUO-SAFETY LADDERS
 24FT. 2 SEC. #900A
 12FT. ROOF #775A
 8FT. FOLDING #585A
 10FT. PIKE POLE (FIBERGLASS)
 6FT. PIKE POLE (FIBERGLASS)



RADIO COMPARTMENT
 (LOCATED UNDER OFFICER'S SEAT)



NOTE: DIMENSIONS SHOWN ARE APPROX. & SUBJECT TO MINOR DEVIATIONS AS MAY OCCUR OR BE NECESSARY IN CONSTRUCTION. THE INDICATED VEHICLE HEIGHT REPRESENTS A CALCULATED DIMENSION. THE ACTUAL HEIGHT OF THE UNIT AS SHIPPED FROM THE FACTORY MAY VARY. THE HOSE CAPACITY IS A CALCULATED AMOUNT. THE ACTUAL CAPACITY MAY VARY DEPENDENT UPON THE STYLE AND VENDOR OF THE HOSE. MINOR DETAILS NOT SHOWN WHERE THERE MAY BE NONCONFORMITY BETWEEN THE ILLUSTRATION AND THE SALES ORDER THE ORIGINAL SALES ORDER & ALL APPROVED SALES CHANGES WILL PREVAIL.

MODEL TB 40 KK PROPOSED FOR
 HADLEY FIRE DEPARTMENT
 HADLEY, MASSACHUSETTS

SALES ORDER
 78D53

CAB	MRDR II
ENGINE	CAT C13 380HP
PUMP	WATERBUS 1250
BODY MATL	L-EXT S/S
AERIAL	N/A

Seagrave
 Fire Apparatus, LLC
 155 B 12th St.
 Summit, NJ 07980
 908.271.1472
 908.271.5480

UPDATE #1
 03/16/2006
 DRAWN BY: BSR
 DATE: 02/22/2006
 SCALE 1/2"=1FT
 NO PE13761

CUSTOMER APPROVED: 03/02/2006